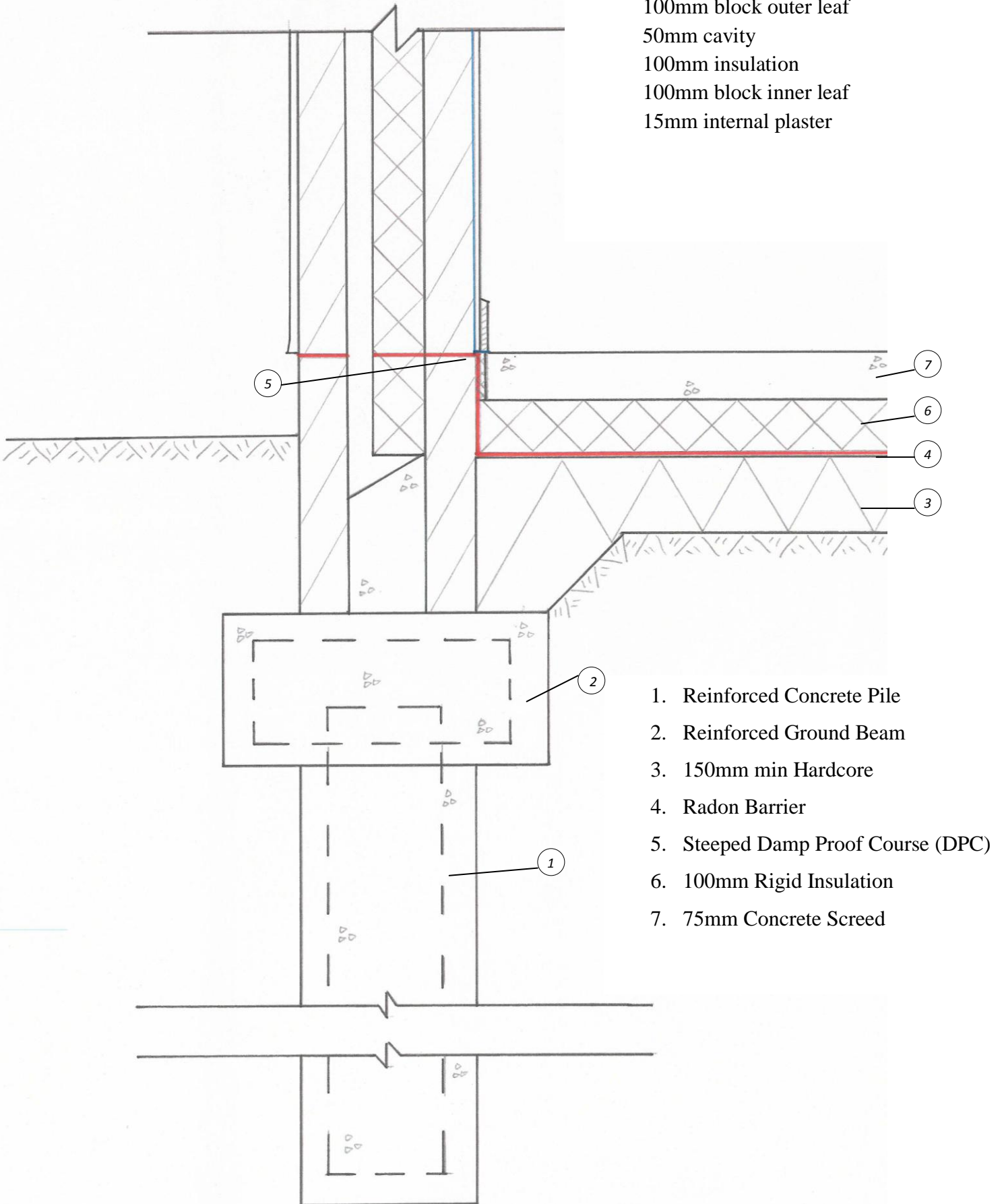


# Piled Foundation

## Cavity Wall:

- 18mm external render
- 100mm block outer leaf
- 50mm cavity
- 100mm insulation
- 100mm block inner leaf
- 15mm internal plaster



1. Reinforced Concrete Pile
2. Reinforced Ground Beam
3. 150mm min Hardcore
4. Radon Barrier
5. Stepped Damp Proof Course (DPC)
6. 100mm Rigid Insulation
7. 75mm Concrete Screed